



Working in  
partnership with

**HS2**

# Evenley Area

## Construction look ahead

22<sup>nd</sup> April 2024

Dave Butcher

Brenna Slade

HS2-MW-EK-Ph1-Ar-Ce-C2-CR-24-19/04/2024

# Construction Update

## Spring to Summer 2024

- A43 works and progress
- A422 update
- A421 Update
- PRow's / Bridleways
- Social Value and HS2 funding



# EKFB – main contractor for HS2



- A joint venture of Eiffage, Kier, Ferrovial and BAM Nuttall.
- HS2 main works contractor for the 80km section between the Chiltern Tunnel and Long Itchington Wood.
- 5 year construction period
  - 15 viaducts
  - 6.9km of green tunnels
  - 22km of road diversions
  - 81 bridges
  - 30 million cubic metres of excavation.

# Twyford to Greatworth (T2G) Project at a glance

## MAINLINE



20 km

## STRUCTURES



5 Viaducts

21 Over Bridges

## EARTHWORKS



6,7 Mm<sup>3</sup> Excavation

3,8 Mm<sup>3</sup> Fill

## OTHER

Road Realignment  
in line construction with  
temp diversion + OB

2.2km Drainage

## KEY DATES

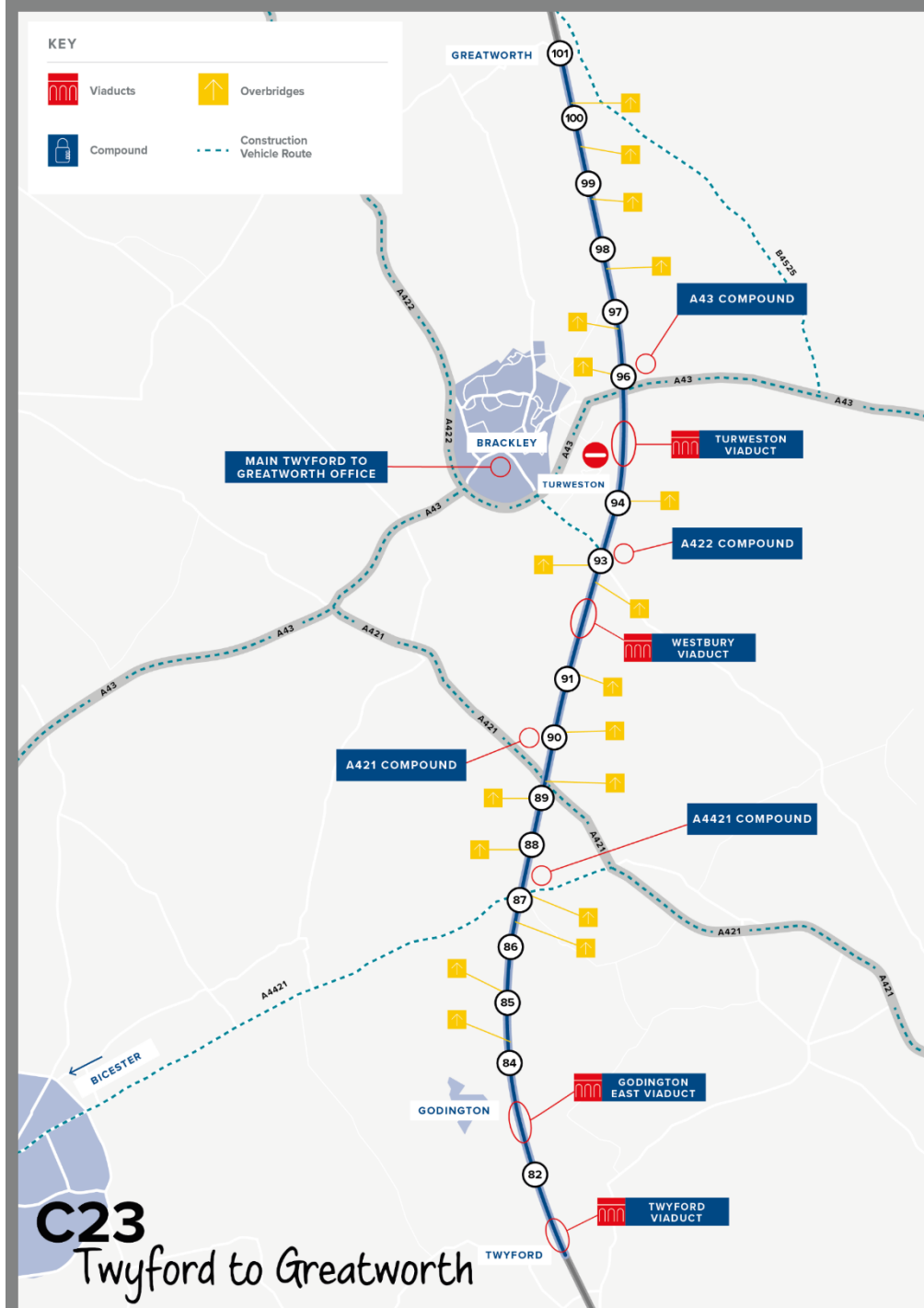
KD 21 (N)	27 Mar 26
KD26	27 Mar 26
KD22	20 Mar 26
KD21 (S)	11 Feb 26
KD19	28 Jan 26

## COMPOUNDS

- A43
- A422
- A421
- Brackley Office
- A4421 (School End)

## AREAS OF INTEREST

- Self Delivery
- Main Material supplier for High Speed Rail Embankments
- Interface with NH
- Complex hydrogeology
- Longest & Deepest cuttings in C23



# Engagement Update

## What is a Mobile Visitor Centre and how will it benefit communities?

- The Mobile Visitor Centre is essentially a touring information centre that gives us flexibility to visit villages, towns, community spaces or local events, to share updates on our construction works and answer questions from the public
- The MVC will feature fixed informative displays on HS2 and EKFB, as well as two large interactive digital screens featuring mapping software, videos and photo galleries. We will also have copies of recent notifications and fact sheets
- We encourage residents to come along and ask us questions about the project and what works we have coming up in the area, and we hope that they will find it informative and helpful





Working in  
partnership with

HS2

---

# A43 Overbridge

- 65.8m in length
  - 34.1m wide and upto;
  - 8.6m m above track level
  - The Overbridge will comprise of a dual carriageway road comprising of two carriageways, hard strips, and asphalt verges.
  - The A43 Overbridge has been designed to allow for the future provision of a cycleway should the highway authority National Highways upgrade the cycling provision along the entirety of the A43 in the future.
-



## A43 Realignment - Temporary Diversion Works Programme

### •Construction Phase 1

- NB and SB highway diversion Construction June 23 – Nov 23 - Complete

### Construction Phase 2

- Overbridge Construction Dec 23 – May 25 - Ongoing

### •Construction Phase 3

- A43 Highway Diversion Removal (NB&SB) May 25 – Oct 25



# A43

## A43 Short Term Programme

- Piling. Start Date 18th March 2024.
- Planned Completion Date – Mid-May 2024
- I&M (Instrumentation and Monitoring) Installation.
  - Early May till June
- Earthworks excavation inside the island.
- This summer June till August.
- [A43 bridge progress video](#)





# A422

## Current Activity

1. A422 Piling works to commence in March
2. Substructure Works to commence starting with first week of April
3. Abutments to be finalise by August 24
4. Bored Pile phase 2 to commence August 24
5. Piers to be finished by December





Working in  
partnership with

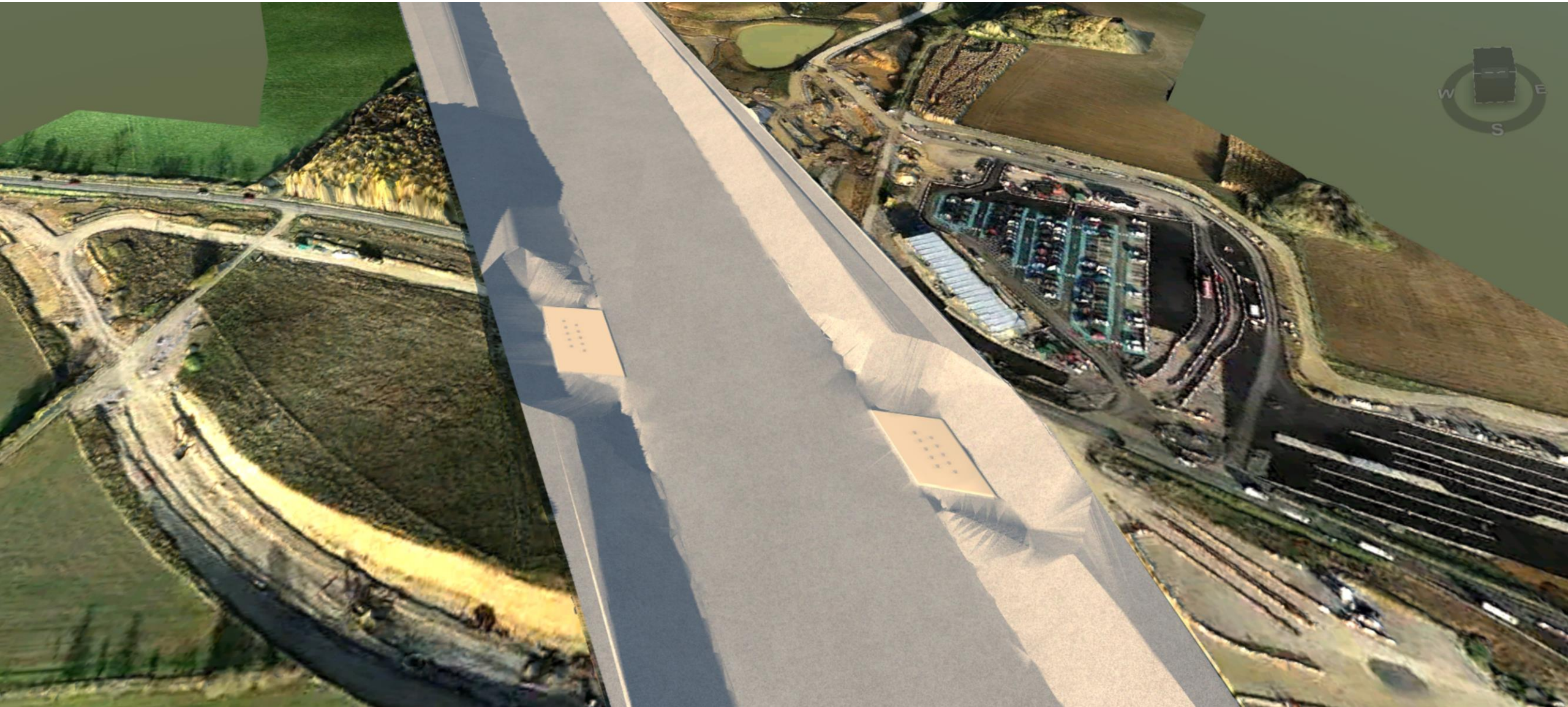
HS2

# A422 Overbridge

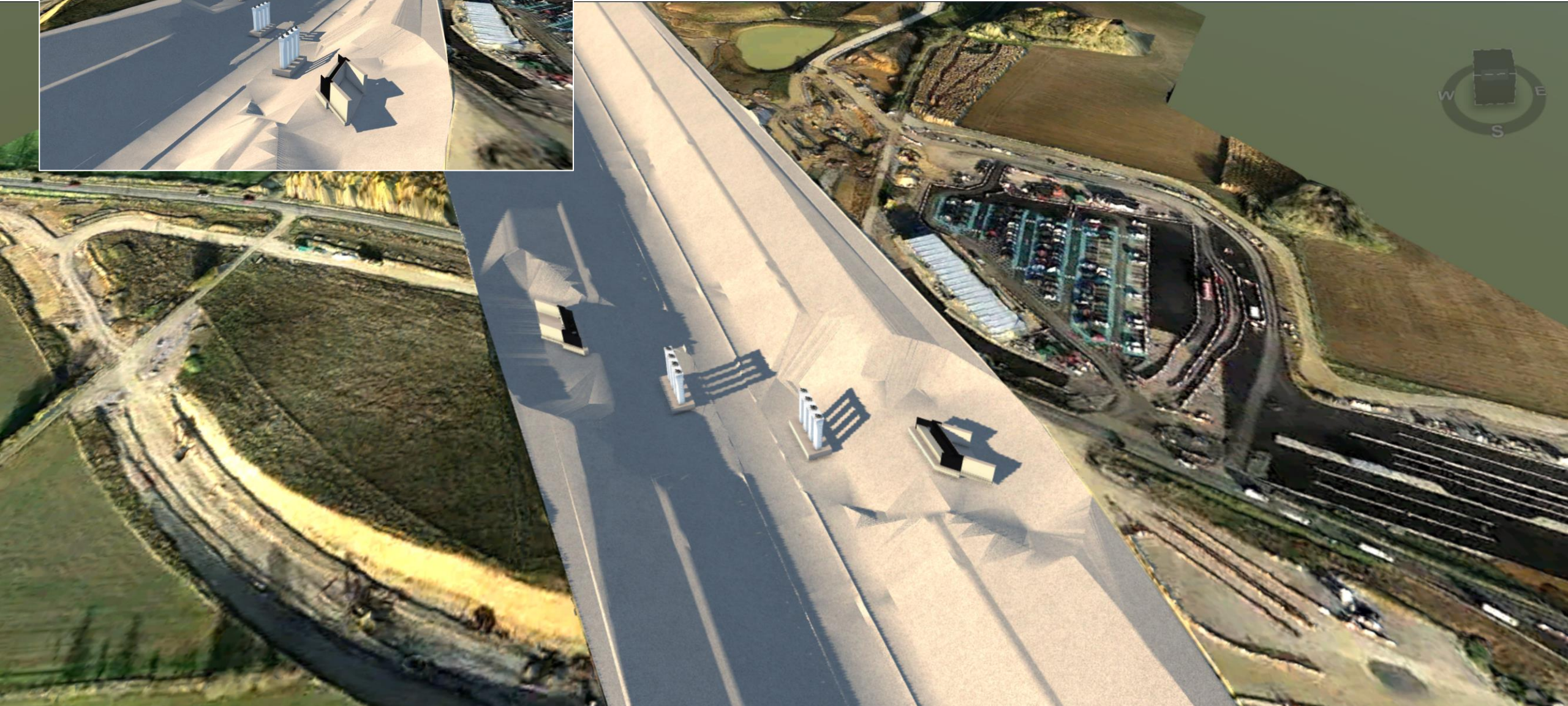
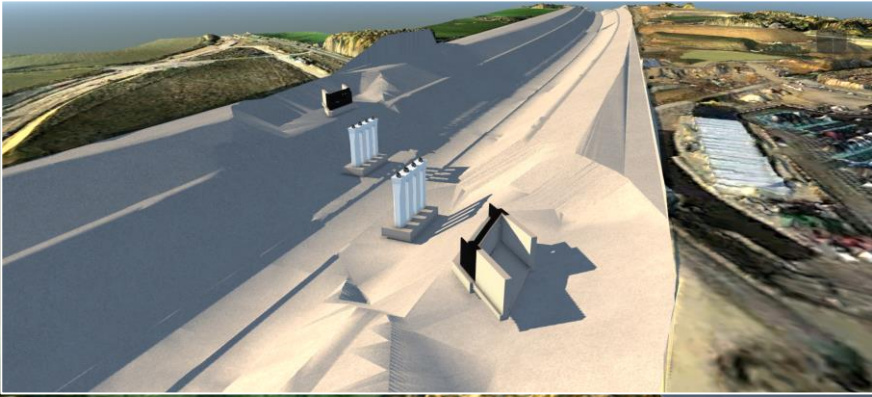
- 124m in length
- 10.6m wide and upto;
- 26m above track level
- The Overbridge will comprise of a single carriageway road that will be 6m wide

## 2. Abutment piling

- 1.1.1 Temporary excavation
- 1.1.2 Piling Platform construction
- 1.1.3 Bore Piling Activity
- 1.1.4 Pile cropping
- 1.1.5 Integrity testing



# Pier completion end of 2024





# Look Ahead

- Concrete pour for the OCC piers
- [Westbury Viaduct video](#)



'Grovehill' Embankment  
Start of the Westbury Viaduct

HS2 line of route

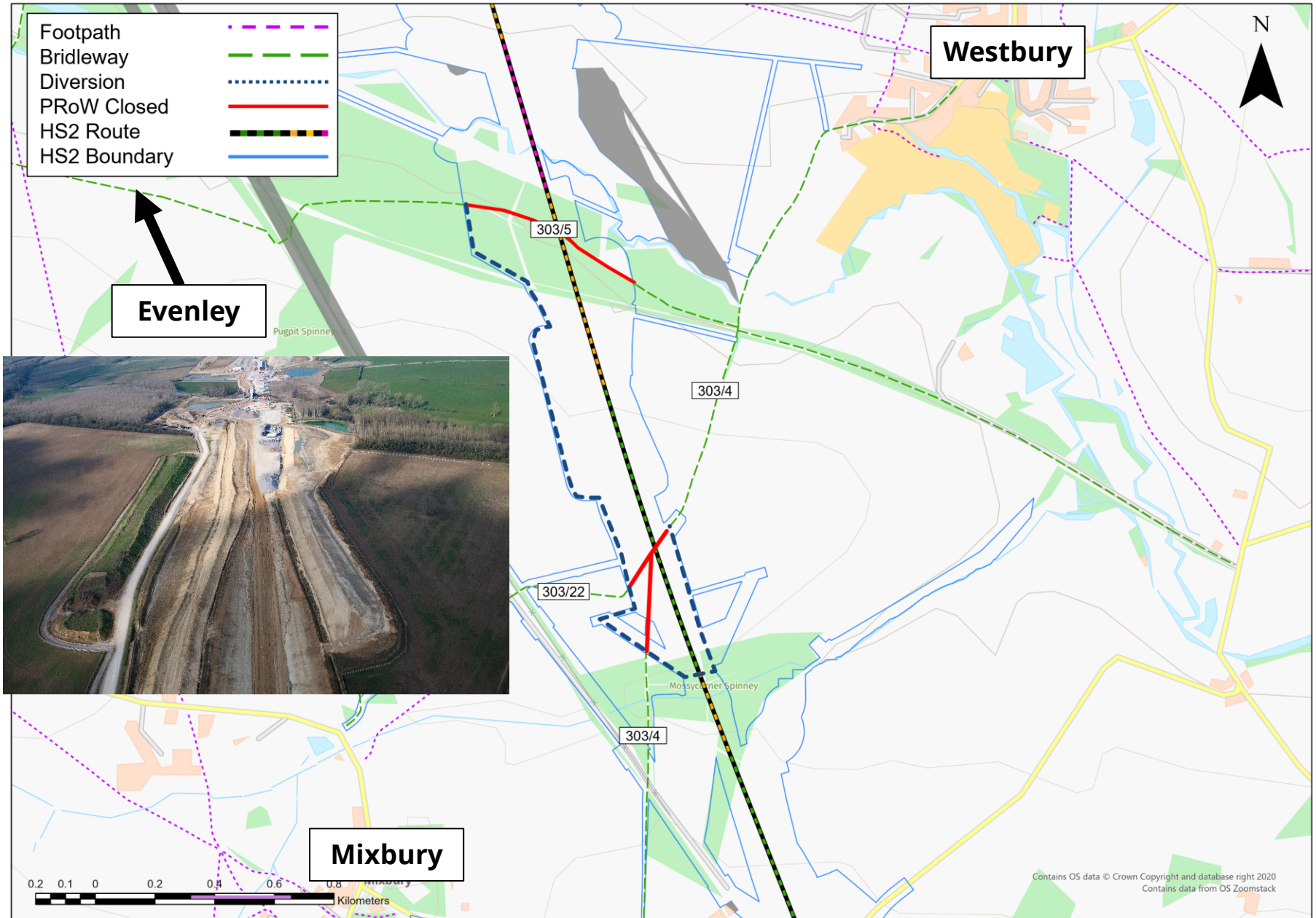
Westbury Viaduct  
Assembly of steel works.  
Precast concrete planks.  
Launching platform



# Footpaths

## Current Activity

- Westbury 'circular ride'
- Bridleway 303/5 will need to close to allow the construction of the Westbury Viaduct.
- We will provide a diversion route using the existing 303/4 bridleway crossing and construct a temporary route to the west of the HS2 line.
- The bridleway known as 303/4 crosses the route of the HS2 railway.



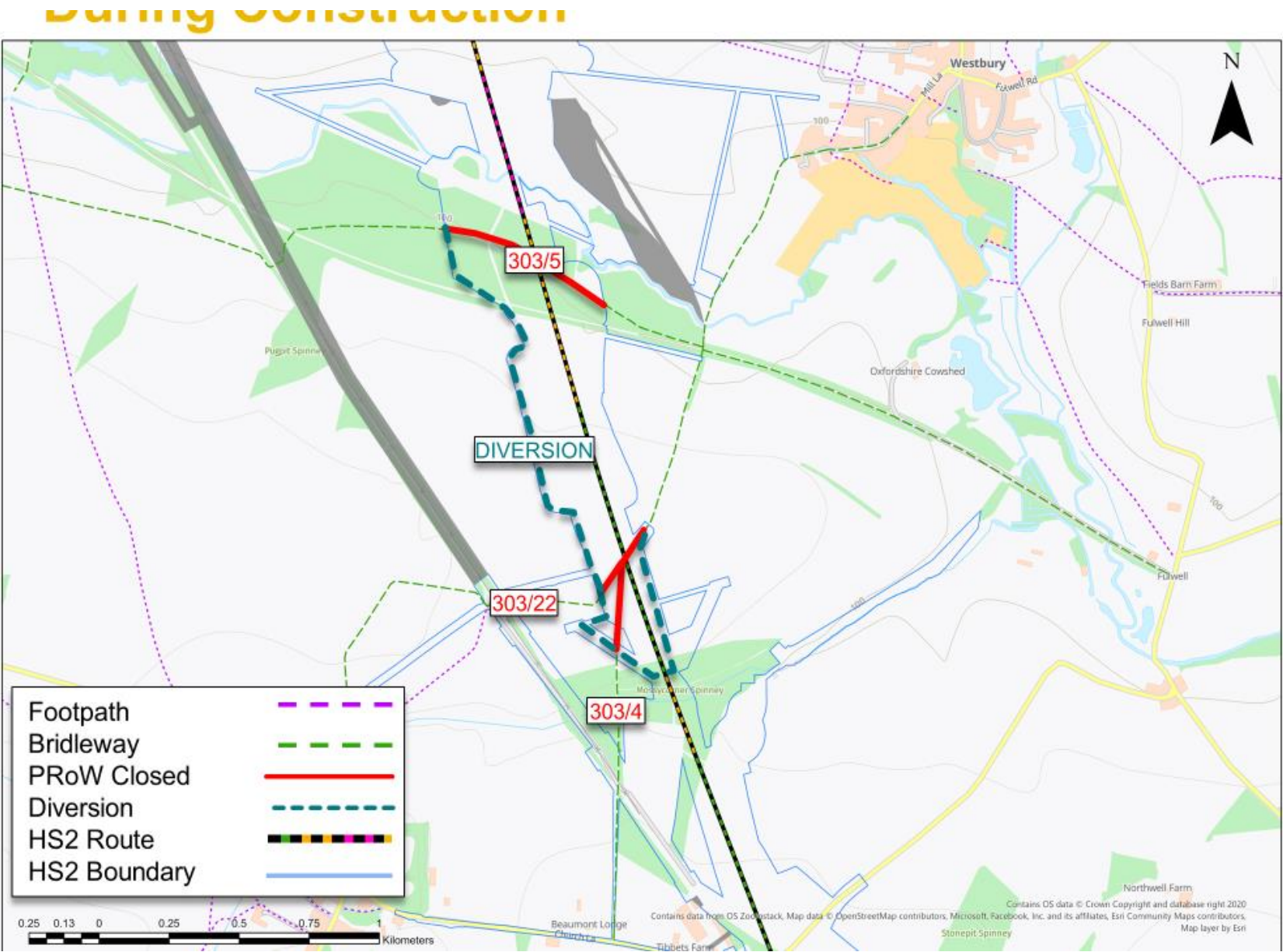
# Bridleways 303/4, 303/5 & 303/22

## Bridleways 303/4 & 303/22

Closed **March 2023** to **Q3 2025** due to earthworks and Mass Haul. Temporary diversion to the south of the existing alignment as shown on the map. This is proposed to remain until the construction of the permanent diversion (safety and security dependant). The permanent diversion will be onto Bridleway 303/4 Overbridge.

## Bridleway 303/5

Closed **February 2024** to **Q4 2025** due to the construction of Westbury Viaduct and associated earthworks. Temporary diversion along the edge of the construction boundary, to Bridleway 303/4. The permanent diversion will be under Westbury Viaduct





# Bridleways 303/4, 303/5 & 303/22

## Bridleways 303/4 & 303/22

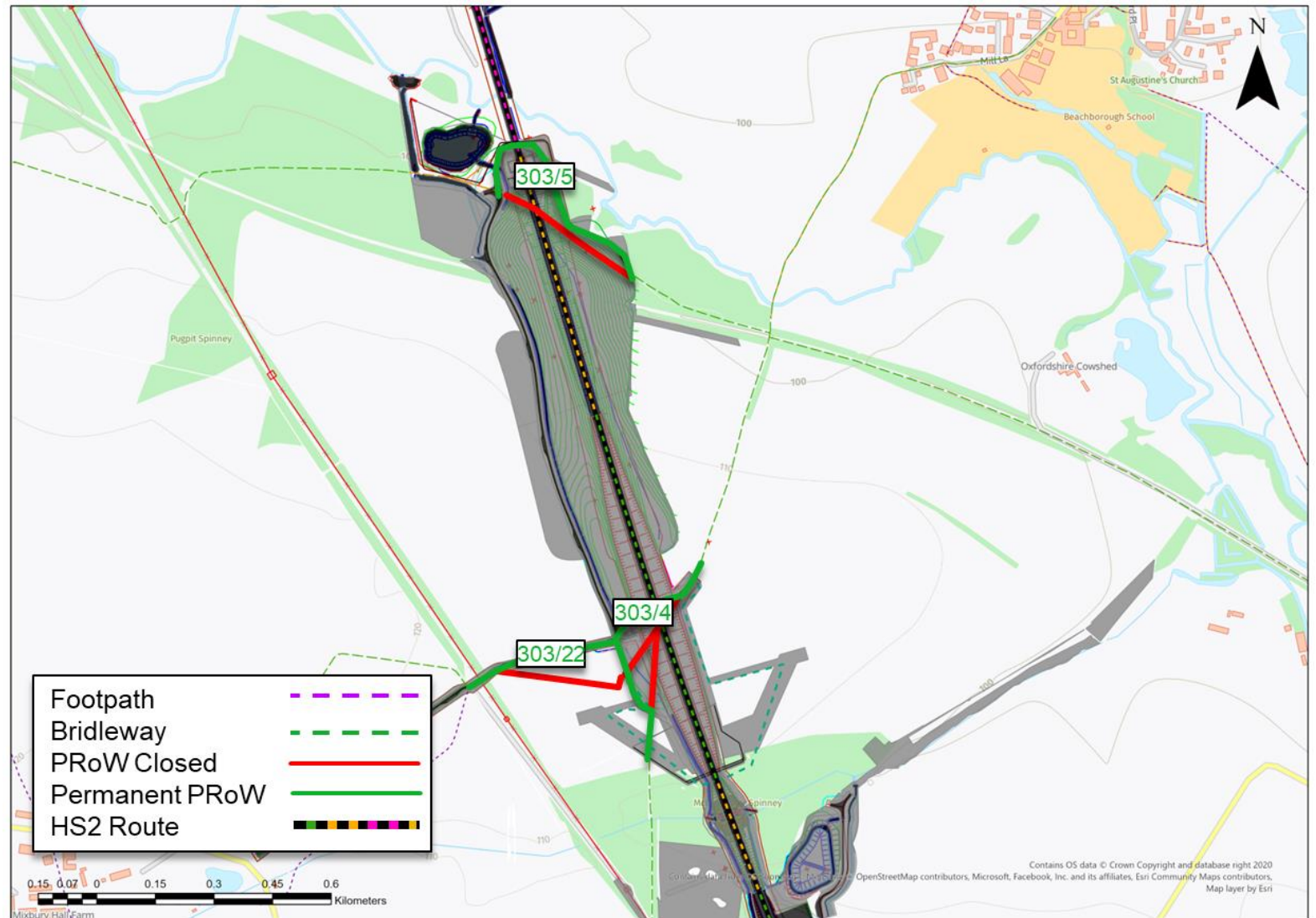
The permanent diversion will be onto Bridleway 303/4 Overbridge.

**Current opening date: Q3 2025**

## Bridleway 303/5

The permanent diversion will be under Westbury Viaduct

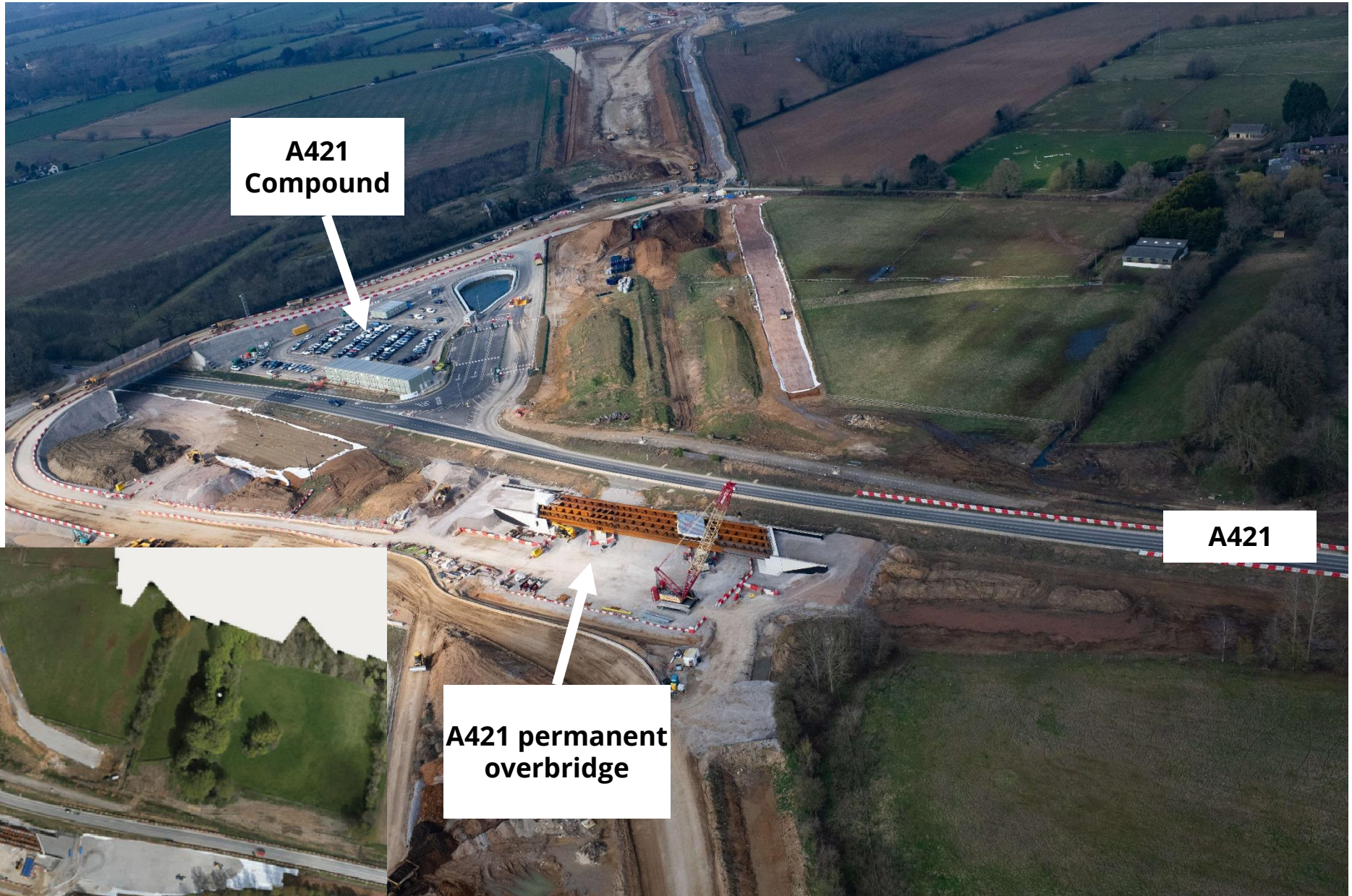
**Current opening date: Q4 2025**



# A421

## Current Activity

- A421 London Road Overbridge
  - 70m in length
  - 9.3m wide
  - 5m above track level
- A421 in April we have 3-way lights in place, for the 11Kv diversion.
- A421 overbridge



**A421  
Compound**

**A421**

**A421 permanent  
overbridge**



# Community Activities 2024

Life in Brackley Magazine – April Issue, circulated to approximately 8,500 properties in and around Brackley. (HS2 Green Corridor).

## Community Engagement 2024:

- HS2 Northants Liaison meeting on 16th Feb 2024: Provided detailed road closure phasing for WNC areas.
- Joint site tour with WNC Traffic & Planners on 13th March 2024.
- Brackley Town council catch up with Tony Bagot-Webb on 26th March 2024.

## Radstone Village engagement:

- Connected donated defibrillator to external power supply on 29th Feb 2024.
- Attended Radstone annual parish meeting on 21st March 2024, offering works update and defibrillator training to residents.

**EKFB** Working in partnership with **HS2**

### HS2's Green Corridor

We understand that local communities have concerns about the environmental impact of building HS2. That's why we've put an extensive environment programme in place, including our Green Corridor alongside the railway.

You can track the development of the Green Corridor using our online mapping tool. This will be updated regularly to show:

- How we are minimising and compensating for the environmental impact of HS2 (points and areas shown on the map in light blue); and
- The progress of environmental and community projects (points and areas shown on the map in purple).

Our Green Corridor will run alongside the railway, creating a network of bigger, better-connected, climate resilient habitats and new green spaces for people to enjoy. We have already started planting new woodlands and creating new ponds, grasslands and meadows, with many new habitats flourishing, before a single train has started running.

We're now over five years into our extensive environment programme to create more than 33 square kilometres of new wildlife habitats along the HS2 route – the equivalent of 23 new Hyde Parks.

Scan the QR Code to take you to the HS2 website where you can find out more about the Green Corridor.

**Keep up-to-date with your local community website**

To find out more about what's happening in your area and receive regular email updates, you can sign up to our local community websites at: [www.hs2inyourarea.co.uk](http://www.hs2inyourarea.co.uk)

#### Did you know, between Twyford & Greatworth...

Your local area engagement team have carried out over 500+ recorded engagements since January 2023.

They have taken part in 25+ community drop in events or visits with our mobile visitor centre.

They have also supported over 50+ social value initiatives supporting local communities, charitable organisations and schools.

#### Take a look at our aerial footage

One of the best ways to see the progress we are making on site is from our new aerial footage. The footage gives an annotated overview of where different structures will be found once HS2 is complete along with an update of how the landscaping is currently looking.

Scan the QR Code to see our aerial footage video.

14 To advertise, Email [advertise@brackley.co.uk](mailto:advertise@brackley.co.uk) Visit [brackley.co.uk](http://brackley.co.uk) Call 01280 422 412

Contact our HS2 Helpdesk team on 08081 434 434

## HS2 Update

Twyford to Greatworth | Spring 2024

High Speed Two (HS2) is the new high speed railway for Britain. You can sign up for regular updates in your local area at [www.hs2inyourarea.co.uk](http://www.hs2inyourarea.co.uk)

### Inside our spring newsletter....

Our newsletters are an important tool used to update local communities on the progress of the HS2 project. This newsletter has been created specifically for the Twyford to Greatworth (T2G) construction area, located between Twyford in North Buckinghamshire and Greatworth in Northamptonshire. It includes the latest information on upcoming construction activities and expected timelines while also highlighting our efforts to support local communities.

In this addition of our newsletter, we will be looking at works coming up over the next few months and this will include:

- Works on the A43 near Brackley for the foundations of the new [overbridge](#);
- Updates for the new Radstone Road [Overbridge](#);
- Westbury Viaduct [update](#);
- Twyford Culvert update;
- Information on the Green Corridor; and
- Social value projects between Twyford to Greatworth.

### Join us ...

You can expect to see our mobile visitor centre visiting a town near you! This specialised vehicle enables us to increase the reach and visibility of our local engagement team, while giving communities a safe, comfortable space where they can find out more about the HS2 project and the work EKFB do.

Please contact the HS2 Helpdesk or visit [hs2.org.uk/events](http://hs2.org.uk/events) for more information on events in your area. [www.hs2.org.uk/events](http://www.hs2.org.uk/events)



# Northants Food Larder

Funding transport solutions and equipment at the Northants Food Larder

# SLEEPING BEAUTY

## Syresham

We supported local theatre group, Take Your SEAT and their annual pantomime productions. We sponsored new theatre lighting for the group. The equipment was used in this years production of Sleeping Beauty and for future productions.



# Men in Sheds, Brackley

Supporting the new MIS Chapter based at Evenley Wood Gardens, we have raised funding to put towards the foundation works for the new shed. We are also visiting the site on Monday with the team from Kier, who managing works along the A43, to see how we can help further.

# Contact our HS2 Helpdesk team

# HS2

You can contact our HS2 Helpdesk team all day, every day of the year on:

Freephone **08081 434 434**

Minicom **08081 456 472**

Email **[hs2enquiries@hs2.org.uk](mailto:hs2enquiries@hs2.org.uk)**

[www.hs2.org.uk/in-your-area](http://www.hs2.org.uk/in-your-area)





Working in  
partnership with

**HS2**

---

## Any Questions?

Do you know of any local charities?

Any volunteering opportunities?

22<sup>nd</sup> April 2024

Dave Butcher – Engagement Manager

Brenna Slade – Engagement Advisor

---