

HS2

EKFB update

15 December 2023

Chris James – EKFB Senior Engagement Manager

Simon Davis – G2S – Engagement Manager, EFFB

Dave Butcher – T2G - Engagement Manager, EKFB



EKFB Update

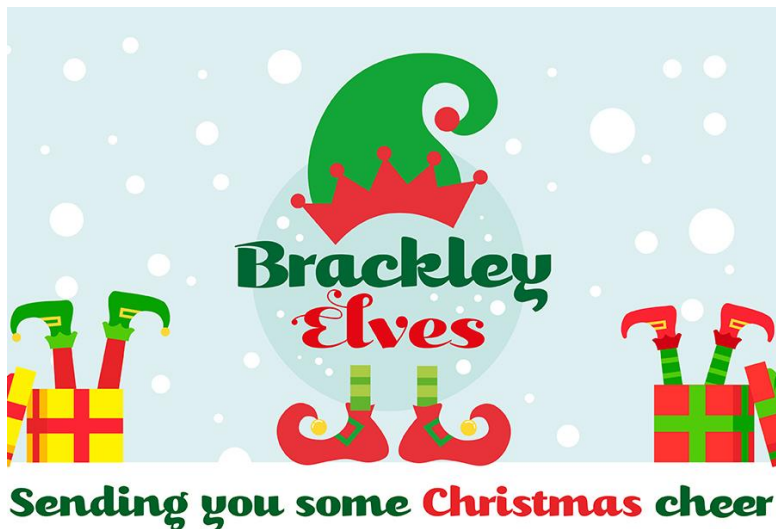
Items

1. Community Investment
2. Site Visits / Tours
3. Construction & Engagement Update
4. HS2 Enquiries
5. Christmas Shutdown



Community Investment

We are currently running a toy and food collection at our sites which will be donated to the charity, **Brackley Elves**. This charity provides support for local families and the elderly community in and around Brackley. We have also donated £1000 to the charity to help support those in need.



This autumn EKFB donated defibrillators to the villages of **Radstone Parish** and **Priors Hardwick**.

For the second year in a row, we supported **Helmdon & Chacombe Village's Firework Fest** for bonfire night. EKFB subcontractors supplied fencing and tower lighting.



This autumn we donated £1000 to Friends of **Bracken Leas Primary School** who are raising funds for a new outdoor classroom in their Forest School Area. We are also going to be helping them with their large fundraising event next Summer.



Local Support this Christmas



Just some of the presents delivered to Brackley Elves Charity this week ready for Christmas!



Food, toiletries and treats donated to Brackley Foodbank by staff from Brackley, Chipping Warden and Southam compounds.

Brackley Allotments

This autumn, in collaboration with HW Martin, we replaced fencing for the Brackley Allotments, Egerton Site, located near St. Peters Church in Brackley.



Before



After

"I popped down to Egerton Site on Friday evening to have a look at the fence your team has put in. What can I say? It's an absolutely amazing job! The quality of the fence and workmanship is fantastic and the site has been left spotless. One of the site reps messaged me Friday afternoon to say what a fab job your team has done and I'd call that an understatement. On behalf of the Association thank you both so much for your generosity and hard work. Thanks too to your team who have done such a terrific job!"

-Brackley Allotment Chairman

Men in Sheds



Volunteers from HW Martin carrying out works for Men in Sheds at their Evenly location.



Members of Men in Sheds, Brackley on a site tour at our A43 compound in October.

In May the team met with the local Men in Sheds group to learn about the organisation and how we could support them while they establish themselves in Brackley; with their first permanent site located at Evenly Wood Gardens.

Men in Sheds is an organisation established to create a space where men and women of all ages and abilities can gather to undertake projects for the local community, themselves, or just meet like-minded individuals.

In doing so people, who otherwise might be isolated, or feel excluded will find a welcoming community to accept them, their skills, and have them teach or learn new ones.

In **October**, working with our subcontractor HW Martin, we were able to carry out some site work for the charity to clear an area for their new shed. We are now working with our suppliers to see how we can support them with the next steps with the installation of a concrete foundation for the shed.

“Many thanks to the Team from EKFB, Joint venture responsible for this section of HS2, for making this happen” (Ref – preparation works for Men in Sheds new site)

Site Tours

- Minibus tours using our site access road
- Emergency Services
- Armed forces
- Schools and community groups



WNC Planning officers and Cllr Eastwood Nov 23



We have an ongoing programme of visits by Chipping Warden Primary School



Royal Engineers Nov 23



Chipping Warden Parish Council April 23



Northants Fire Service Dec 23

Wormleighton Road connection

In early 2024 new sections of highway will open, connecting Banbury Road Overbridge to Wormleighton Road



Northants / Warwickshire Border

Recent Activity

- Bridge Construction
- New highway surfacing
- Banbury Road realignment
- Landscaping

2024 Lookahead

- Wormleighton Road
- Warwick Road
- Landscaping
- Stoneton Lane Green Overbridge



Banbury Road Boddington



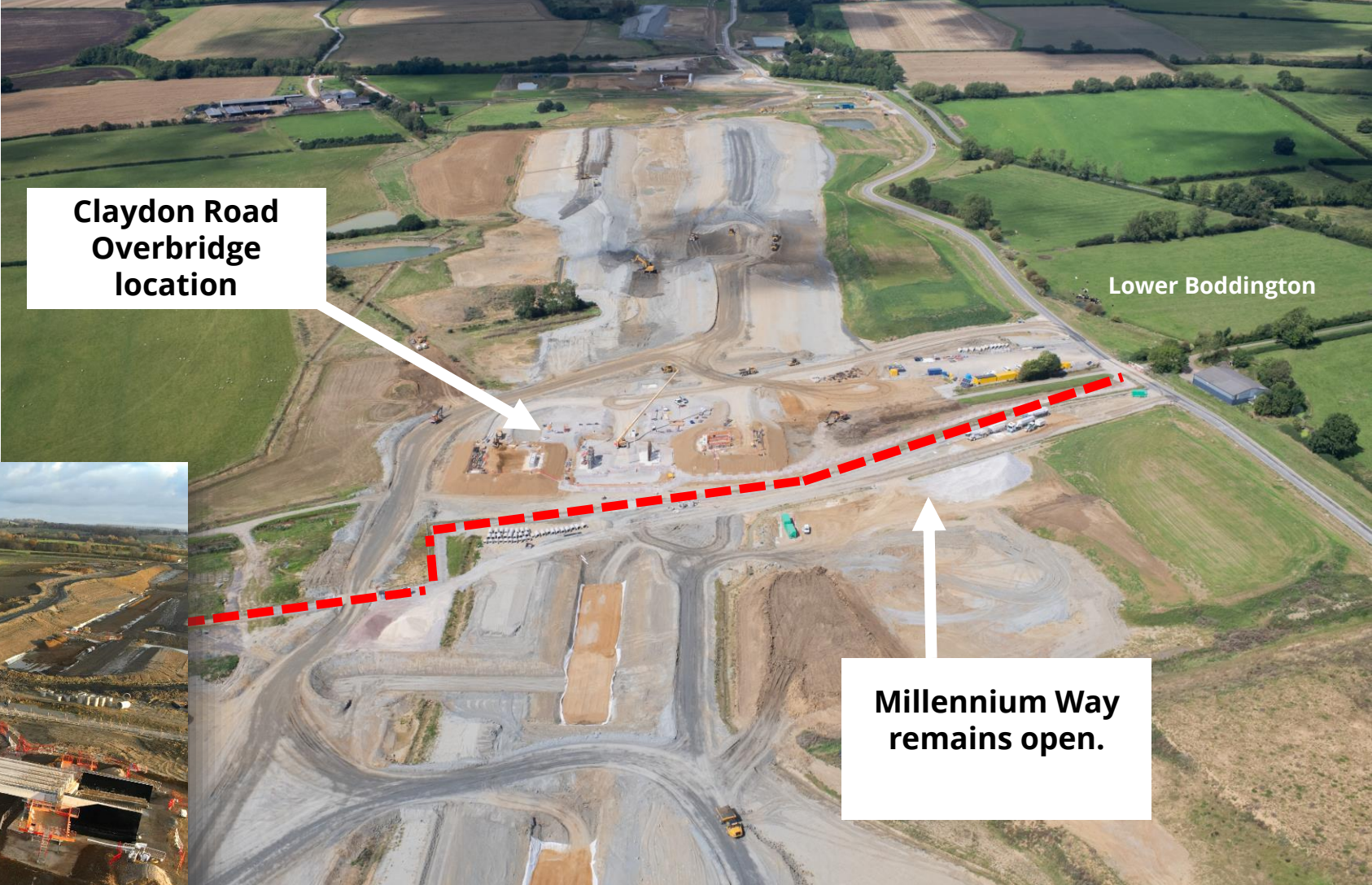
Boddington Area

Recent Activity

- Overbridge substructure
- Beam installation

2024 Lookahead

- Bridge construction
- Stockpile removal
- Landscaping



Claydon Road
Overbridge
location

Lower Boddington

Millennium Way
remains open.



Bridge beams installed in
December

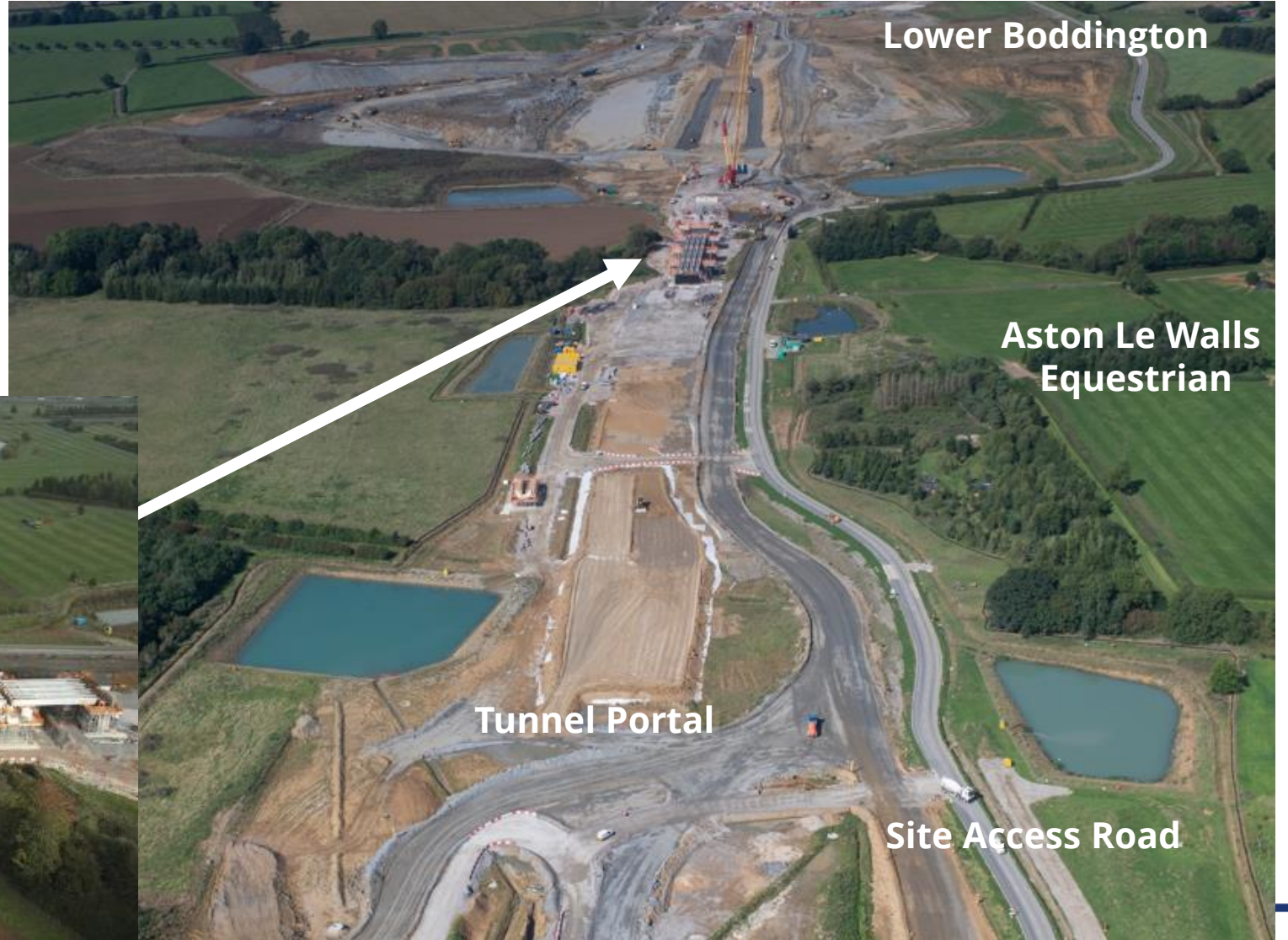
Highfurlong Viaduct

2023 Recent Activity

- Precast beam installation.
- All delivered via site access road

2024 Lookahead

- Viaduct deck and parapets.
- Viaduct completion
-



Highfurlong Viaduct

Beam installation



- We have completed installing the deck beams on the Highfurlong Brook viaduct
- The first viaduct on HS2 to reach this stage of construction.
- Viaduct length: 163 metres long with 7 spans consists of seven spans, crossing Highfurlong Brook at a height approximately 9 metres.

Chipping Warden / A361

Backfilling with earth:
Spring 2024

Realigned A361 construction:
April 2024 – Late 2024

Highway open to traffic:
Late 2024 or early 2025



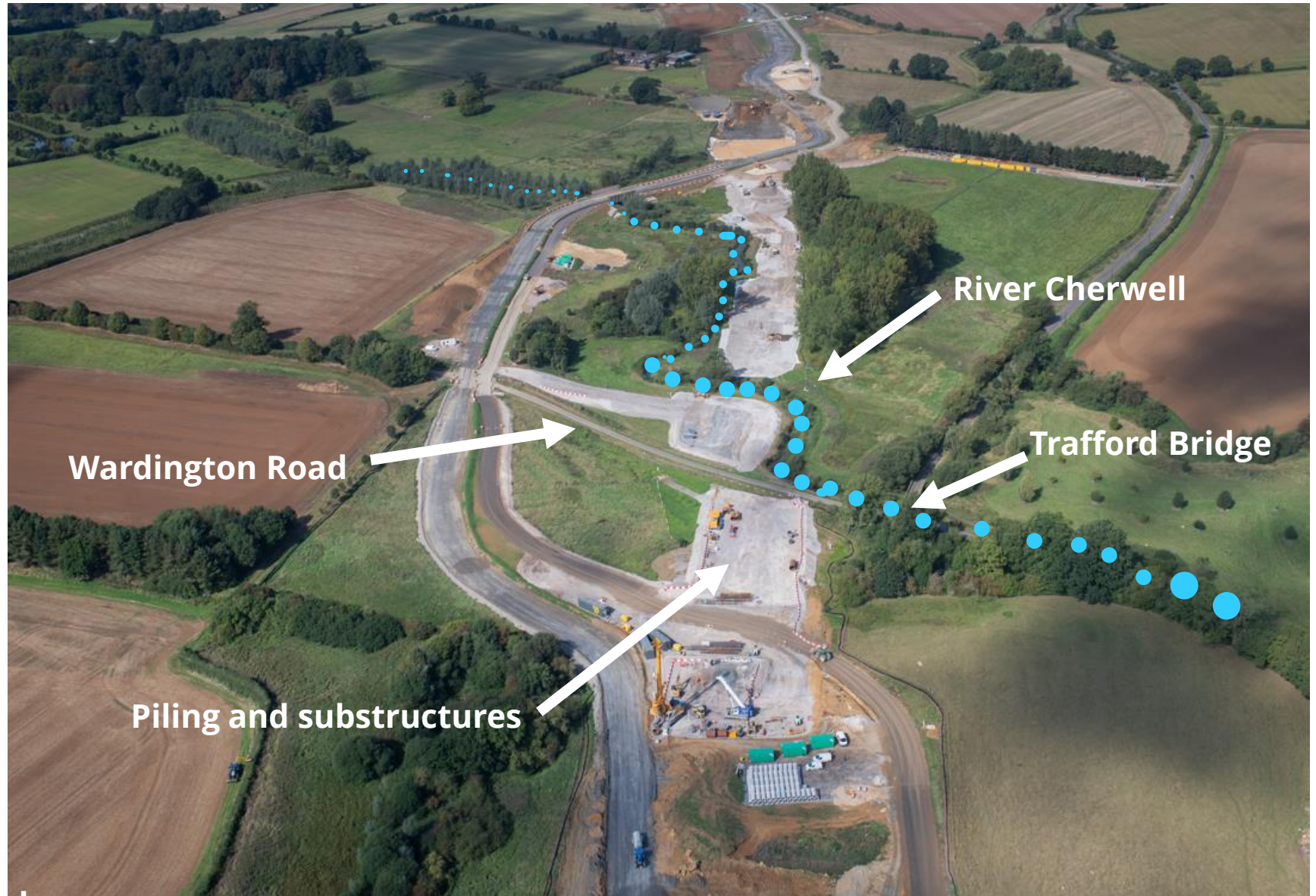
Edgcote

2023 Recent Activity

- Edcote Viaduct piling and foundations
- Watercourse diversions.
- Riverbank reinforcement

2024 Lookahead

- Viaduct Construction
- Wardington Road – highway works
-



Edgcote Viaduct

Design :

The design now as has two beams and provides a more open arrangement. The sides and parapets remain very similar with a textured finish.



Our drop-in event at Chipping Warden, 12 December.

Lower Thorpe

2023 Recent Activity

- Piling and substructures.
- Viaduct pier installation

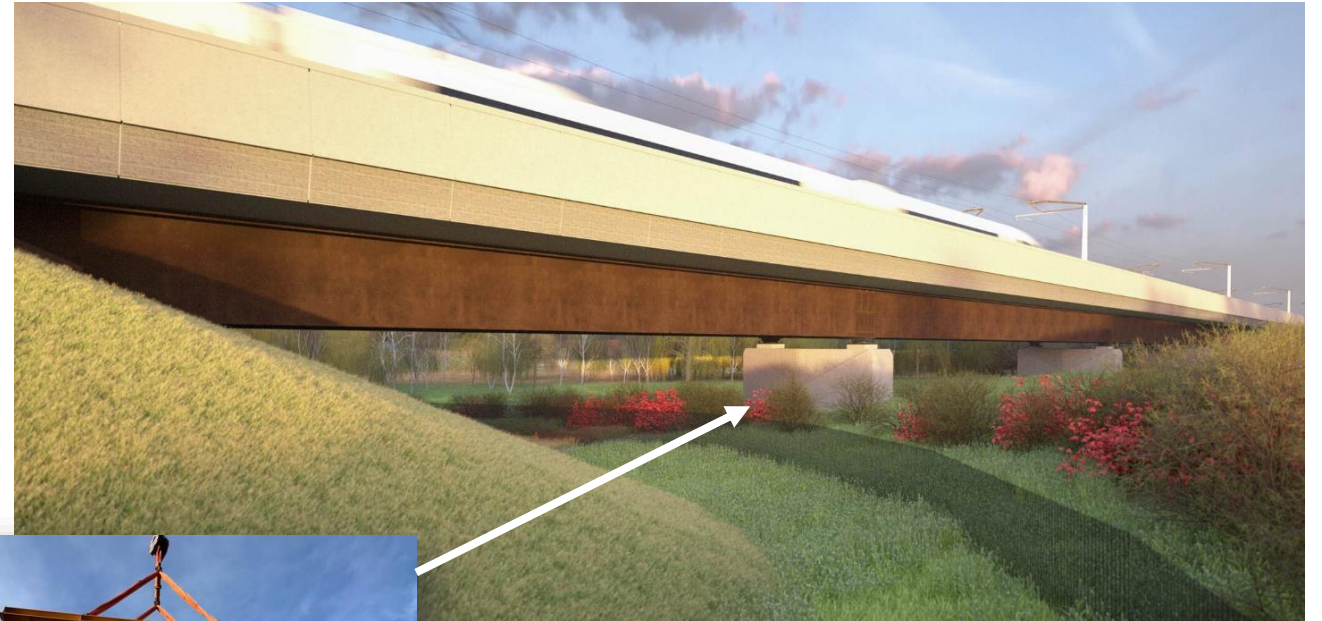
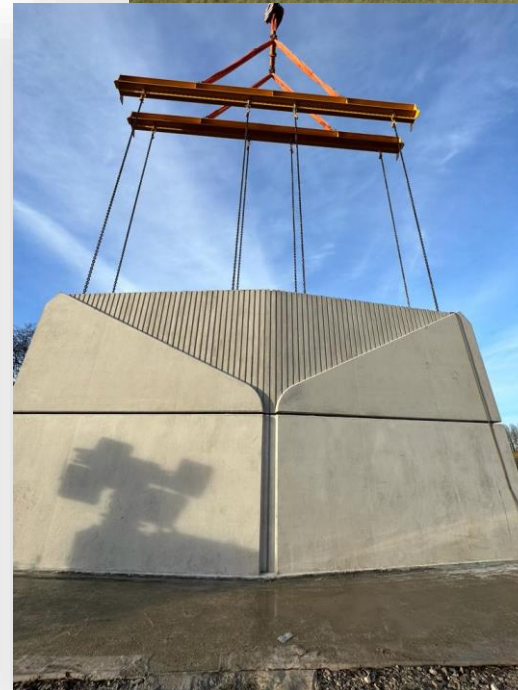
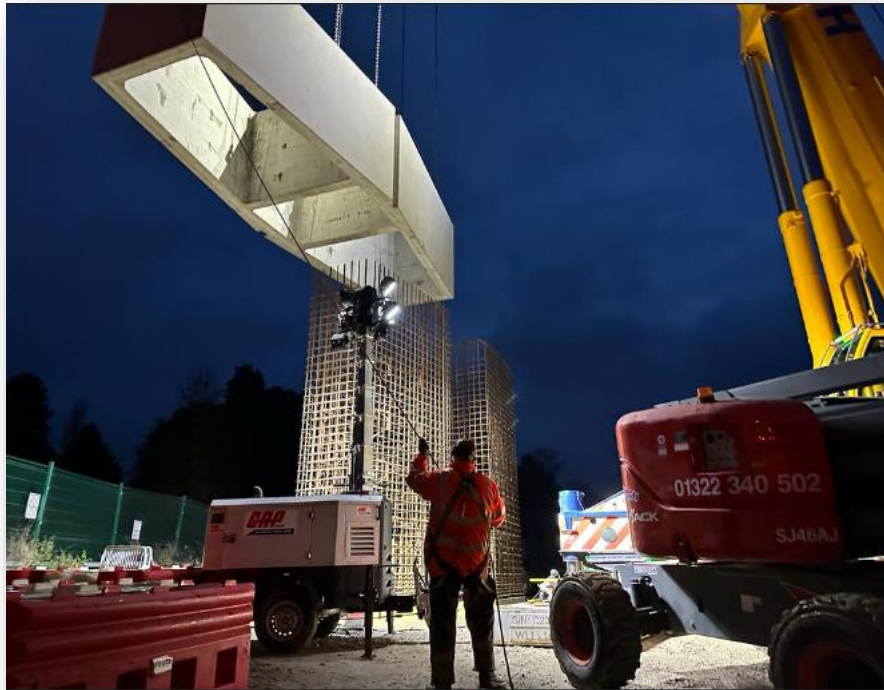
2024 Lookahead

- Viaduct beams and deck installation
- Pre-cast sections delivered using the site access road
-

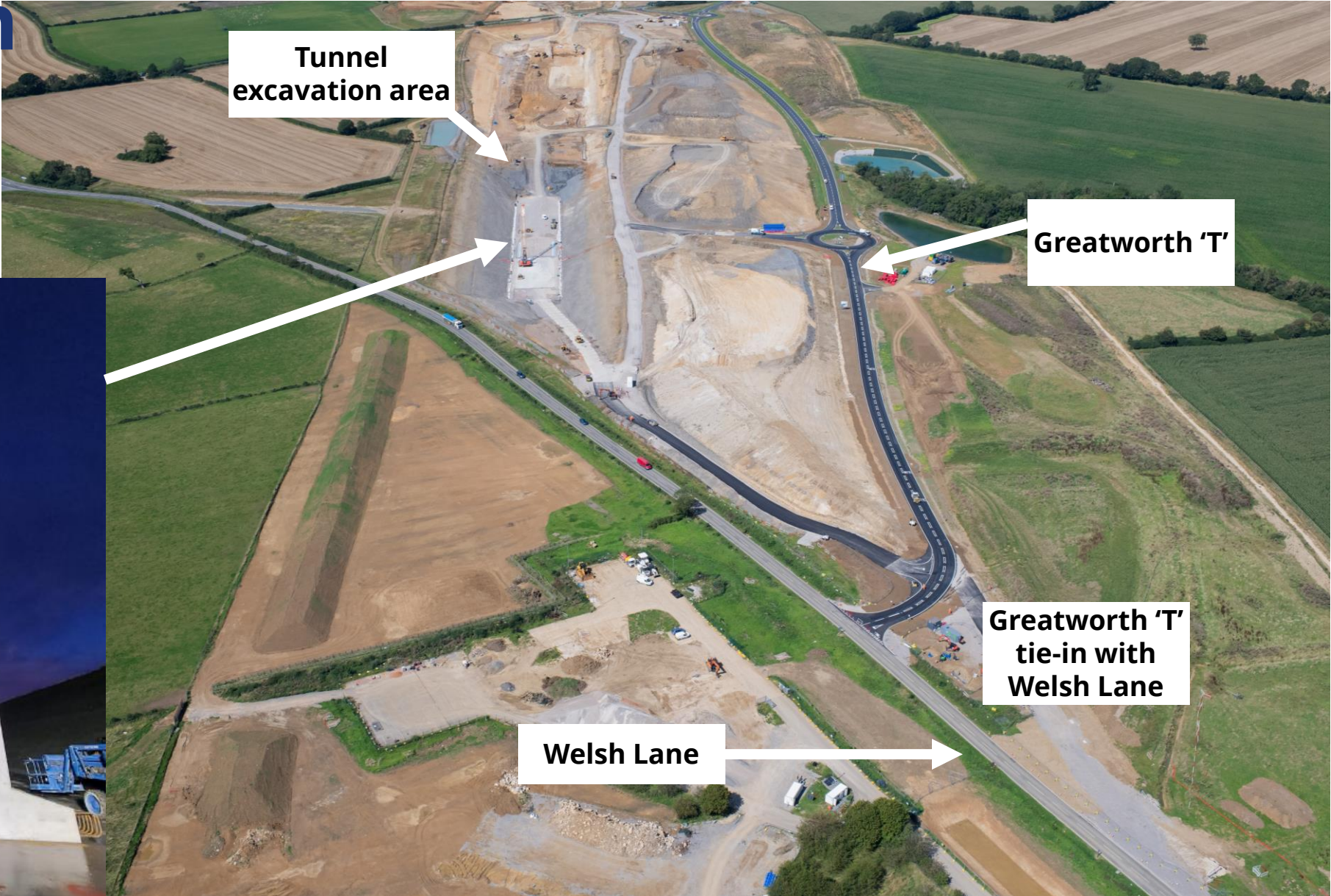


Lower Thorpe

Lower sections of the viaduct piers are now being installed



Greatworth



Greatworth

Helmdon Road Area

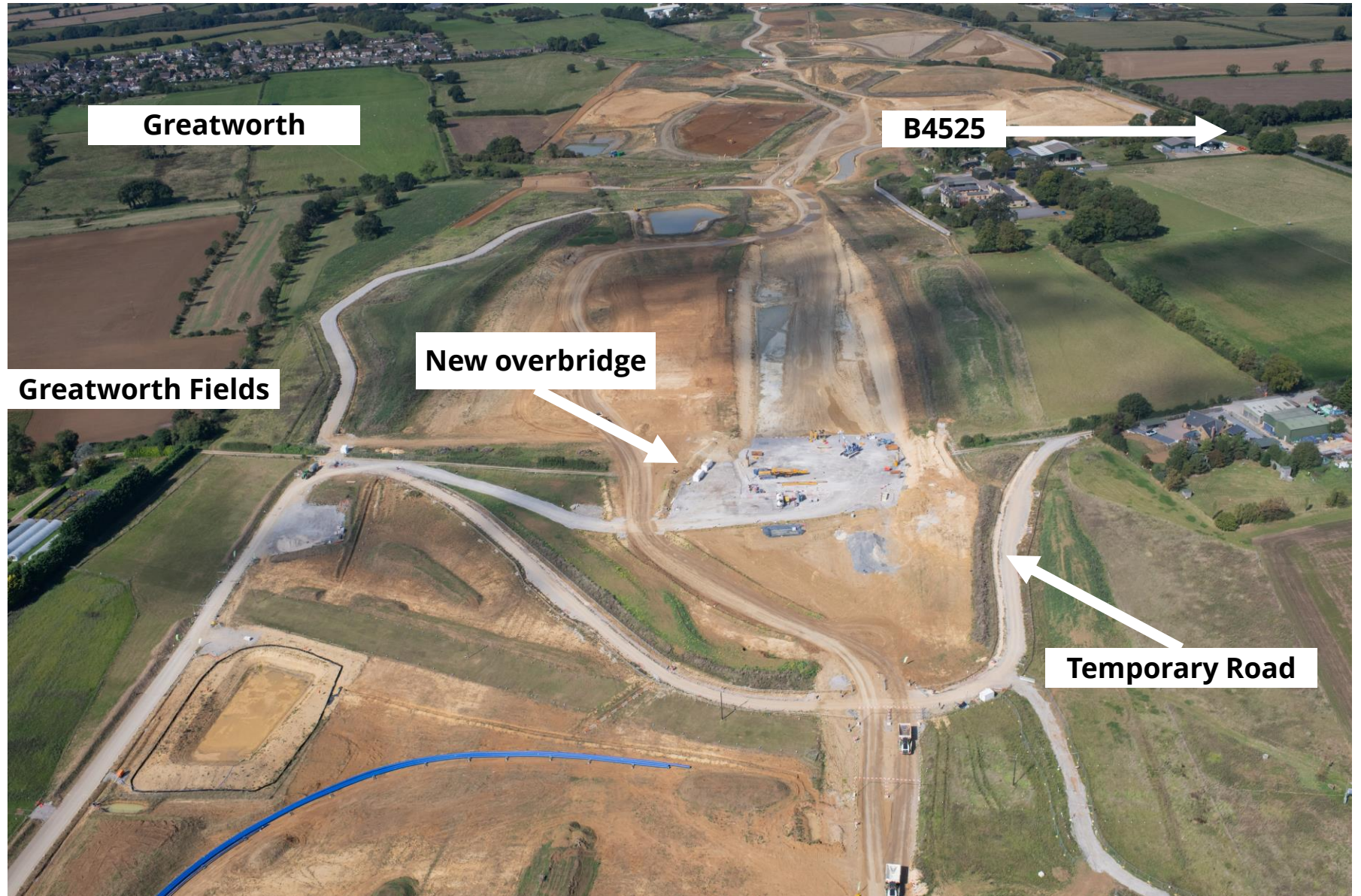
- Helmdon Road was closed in October.



Halse

2023/24 Activity

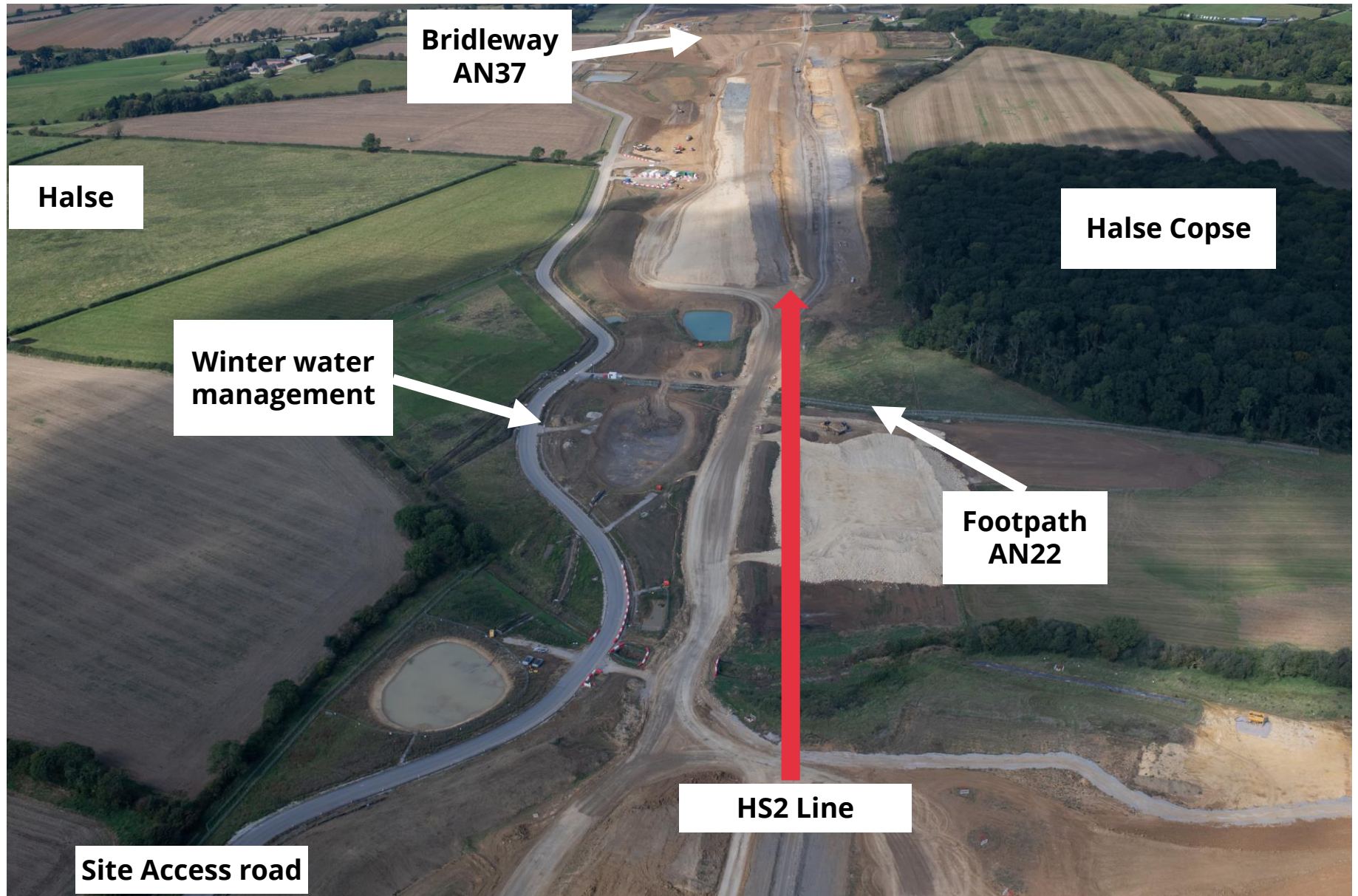
- Earthworks continue
- AN14 Accommodation overbridge preparation:
- AN14 piling have completed:
 - Early 2024 works start on the abutment construction
- Local water diversion ongoing
- **AN14 Accommodation Overbridge:**
 - **approximately span 58.5m and 5.8m wide**



Halse

2023/24 Activity

- AN37 – Piling starts end of January.
- **Bridleway AN37 Overbridge** approximately span 58.5m & 7.1m wide
- Earthworks;
 - Bulk excavation & landscape bunds continue.
- Preparation for the AN22 footpath overbridge – Temporary diversion required Early 2024
- Piling will start spring 2024
- **AN22 Footpath overbridge** approximately span 28.5m and 6.8m wide



Radstone

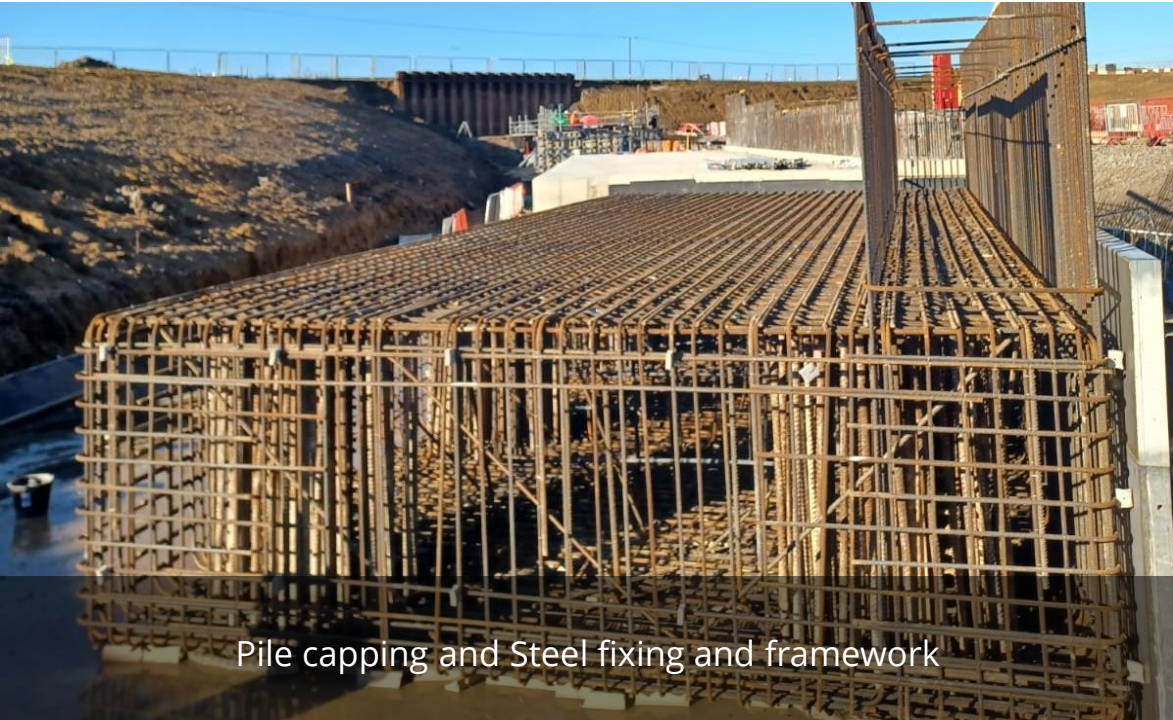
Radstone Rd 2023/24

- Radstone overbridge piling update:
- Complete all pile caps before Christmas.
- Early 2024 - Structural backfill of pile caps, abutments and lower wingwalls
- Beam installation summer 2024
- Bulk excavation – Continues

**Radstone Overbridge
approximately span 31.1m
and 20m wide**



Radstone Road Overbridge



Pile capping and Steel fixing and framework



Wing Wall construction



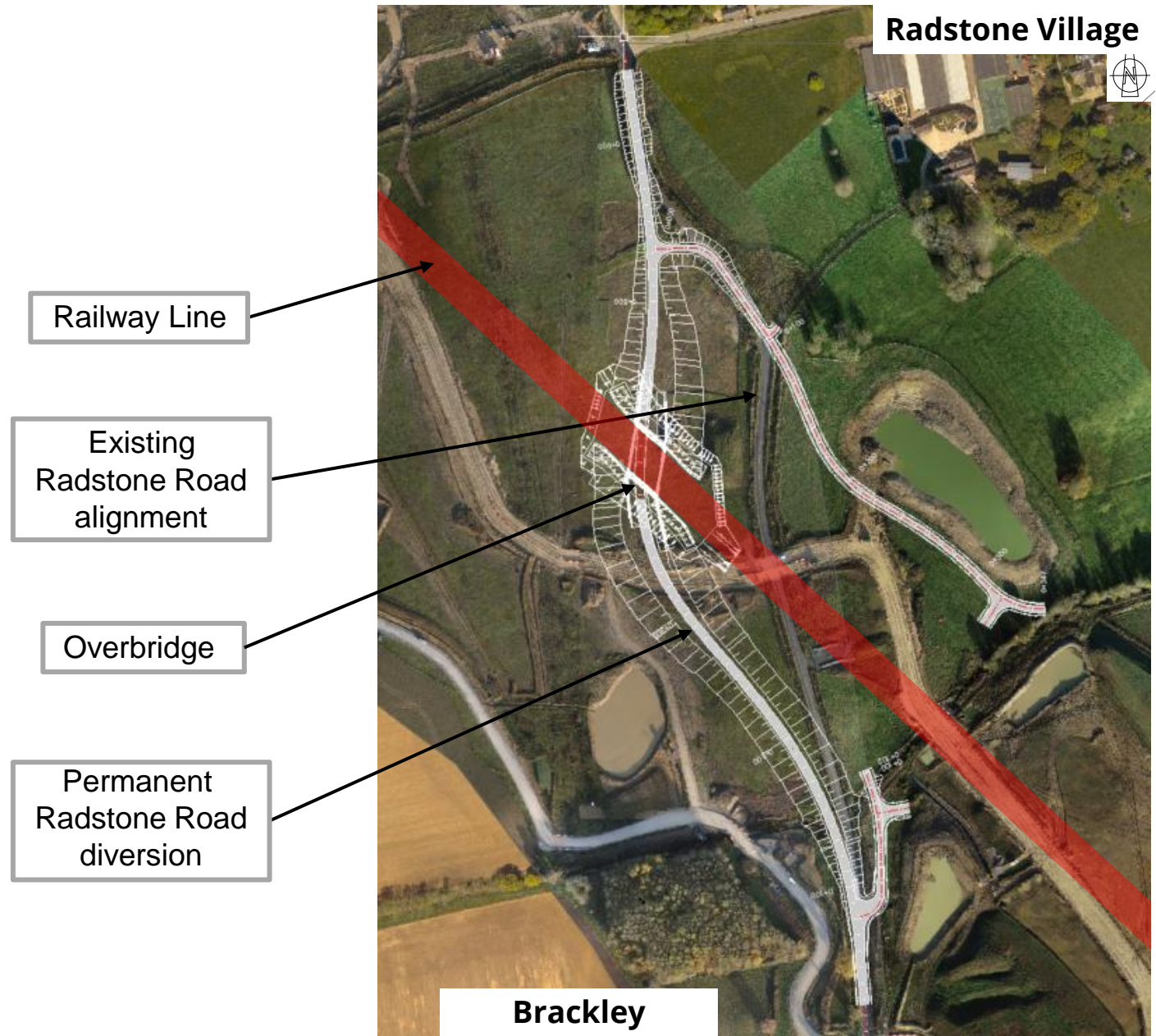
Radstone Road Permanent realignment

*New overbridge will carry
Radstone Road over the HS2
railway line.*

*Overbridge constructed offline
and Radstone Road
permanently diverted onto it*

Reduce future road closures

*Creates more space for
construction off network*



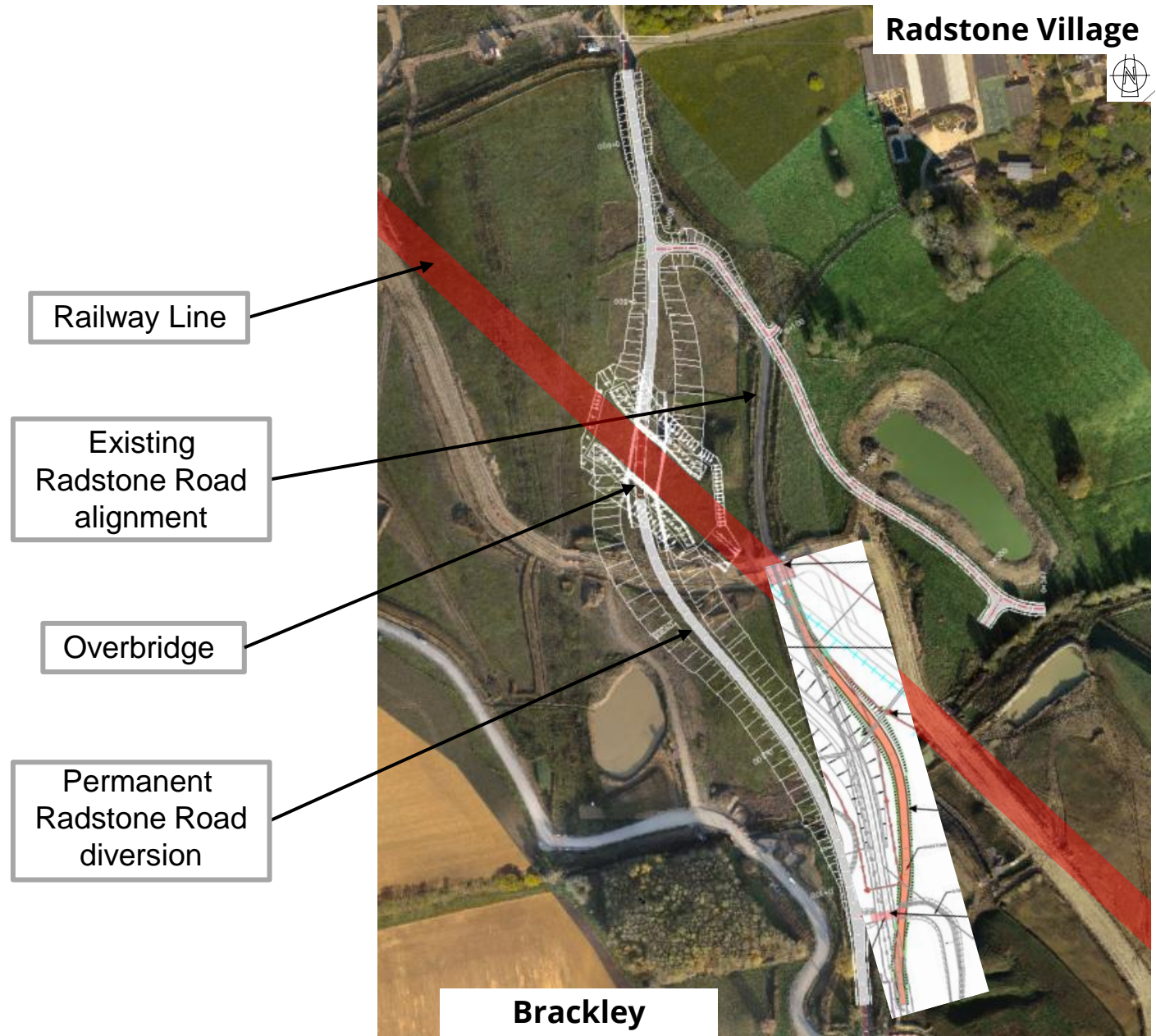
Radstone Road Permanent realignment

*New overbridge will carry
Radstone Road over the HS2
railway line.*

*Overbridge constructed offline
and Radstone Road
permanently diverted onto it*

Reduce future road closures

*Creates more space for
construction off network*



A43 Works Update



Phase 1 - Preparation - complete

Phase 2 - Bridge - now to May 2025

Phase 3 - Phase 3 - Removal to Oct. 25

Early in the new year
A43 southbound weekday
overnight closures

Mid-January to Mid-February

A43 EKFB / National Highways Team



Contact our HS2 Helpdesk team on **08081 434 434**

HS2 Update

Twyford to Greatworth | Autumn 2023

Working in partnership with **EKFB HS2**

High Speed Two (HS2) is the new high speed railway for Britain. You can sign up for regular updates in your local area at www.hs2inyourarea.co.uk.

Inside our autumn newsletter....

Our newsletters are an important tool used to update local communities on the progress of the HS2 project. This newsletter has been created specifically for the Twyford to Greatworth (T2G) construction area, located between Twyford in North Buckinghamshire and Greatworth in Northamptonshire. It includes the latest information on upcoming construction activities and expected timelines while also highlighting our efforts to support local communities.

In this addition of our newsletter, we will be looking at works coming up over the next few months and this will include:

- Works on the A43 near Brackley, constructing a temporary road diversion that will be opening at the end of this [year](#)
- Progress on the A421, A422 and A4421 overbridges
- Earthworks and crushing [activities](#)
- Construction of green overbridges with an update on the Turveston Green Overbridge
- Updates on our ecology surveys and mitigation measures between Twyford and Greatworth
- Community investment updates in Brackley and Twyford

Join us at our next drop in event and meet the team!

We will be visiting Egerton Hall in Brackley to give an update on our [works](#) in the local area.

Thursday, 2 November
10.30am - 2.30pm

Egerton Hall, Juno Cres,
Brackley NN13 6GN

Details of all upcoming events are listed on the [HS2 Events webpage](#)

life in brackley. NOVEMBER 2023 133000
brackley.co.uk

Discover everything Brackley has to offer From High Street to Home-board

DELIVERED FREE TO LOCAL HOMES & BUSINESSES IN BRACKLEY AND THE SURROUNDING VILLAGES

Brackley's Biggest Choice of TILES & BATHROOMS

OPEN 7 DAYS A WEEK | FREE 3D DESIGN | Special Tiles | 0% APR Finance Available

GET AN EXTRA 10% OFF TILES & BATHROOMS | LEAVE BATHROOMS | Click to view as fullscreen

Tipton Business Park, Welwyn Garden City, Herts. | Tel: 0128 875 3131

EKFB Working in partnership with **HS2**

HS2 Construction Update

A43 near Brackley, road closures

Throughout the year, we have been carrying out works for the construction of a temporary diversion of the A43 near Brackley. This diversion will allow us to safely build the new A43 overbridge which will carry traffic over the HS2 railway line.

We have now carried out our main earthworks for the temporary diversion and have been installing drainage. Throughout November we will be carrying out our final works for the new road which will involve asphaltting, wire lining and the installation of road signage. Once these are completed, we will then be in the new temporary diversion to be in the new temporary diversion, there will be two full weekend closures of the A43 on alternating weekends.

You can sign up for the latest works updates in your local area, including for our works along the A43, at: www.hs2inyourarea.co.uk

Frequently Asked Questions about our works along the A43

WHAT ARE YOU DOING ALONG THE A43?
A. We are currently constructing a temporary diversion of the A43 to facilitate the construction of an overbridge that will carry traffic over the new HS2 railway line that will be in a cutting.

WHY DO YOU NEED TO IMPACT THE ROAD?
A. We need to impact the road and divert it to create a safe working space in between the A43 near Brackley and the A43 Southbound. This is where we will be constructing the new overbridge.

WILL THERE BE ANY FUTURE ROAD CLOSURES?
A. Yes, the A43 will be closed for two weekends when we fit the new temporary overbridge into the existing A43 road network. Once the new overbridge has been constructed, we will then need to move the road again which is expected to take place in 2025. This will also need full permanent road closures to fit in the new permanent overbridge to the road network. We will update communities as our works progress.

If you have a question about HS2 or our works, please contact our HS2 Helpdesk team on 08081 434 434 or email hs2enquiries@hs2.org.uk

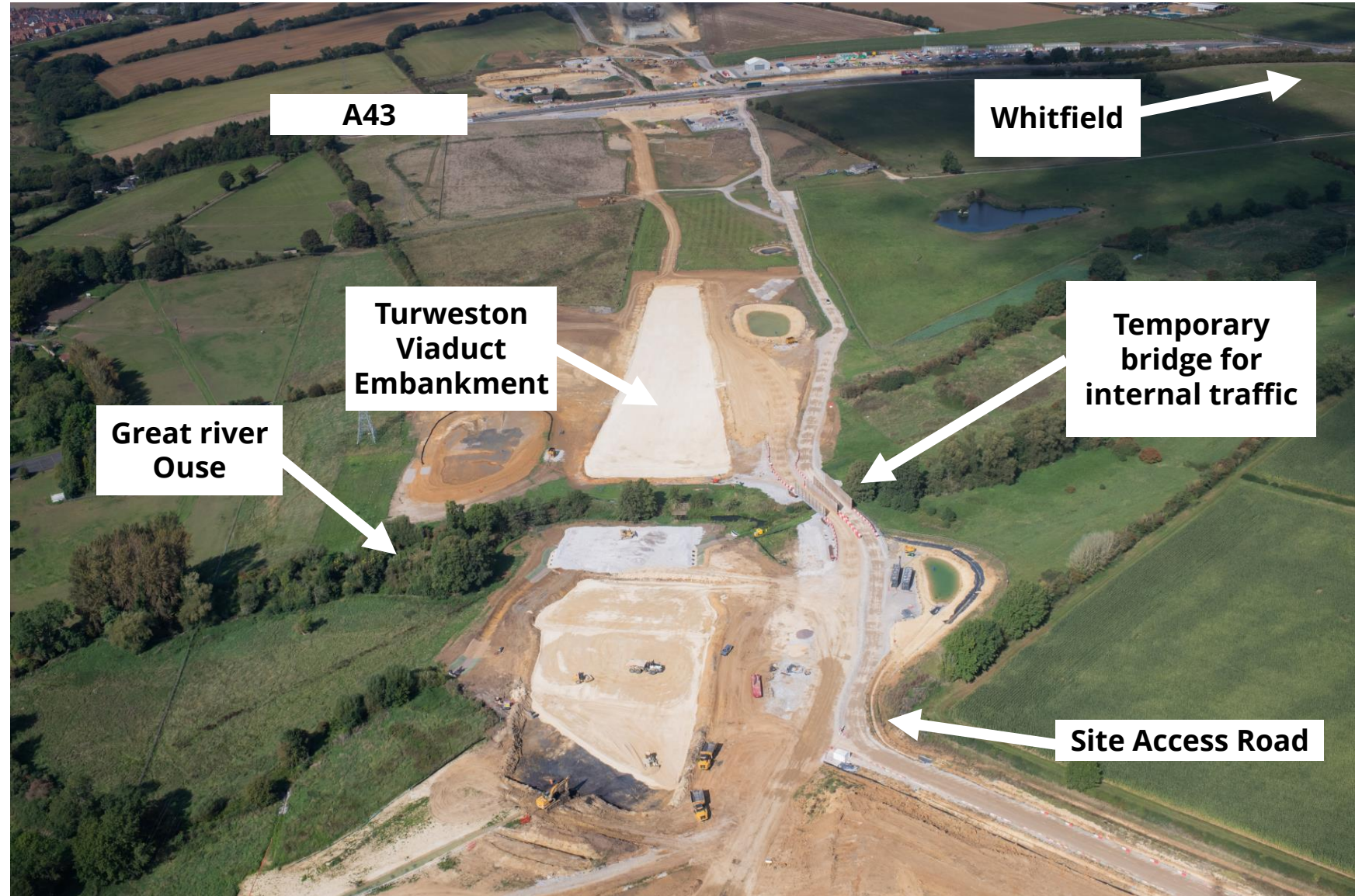
26 | To advertise, email advertising@brackley.co.uk | brackley.co.uk | Call 01280 422 402

Best Collaboration Awards 2023 A43 EKFB & National Highways



A43 to Turweston

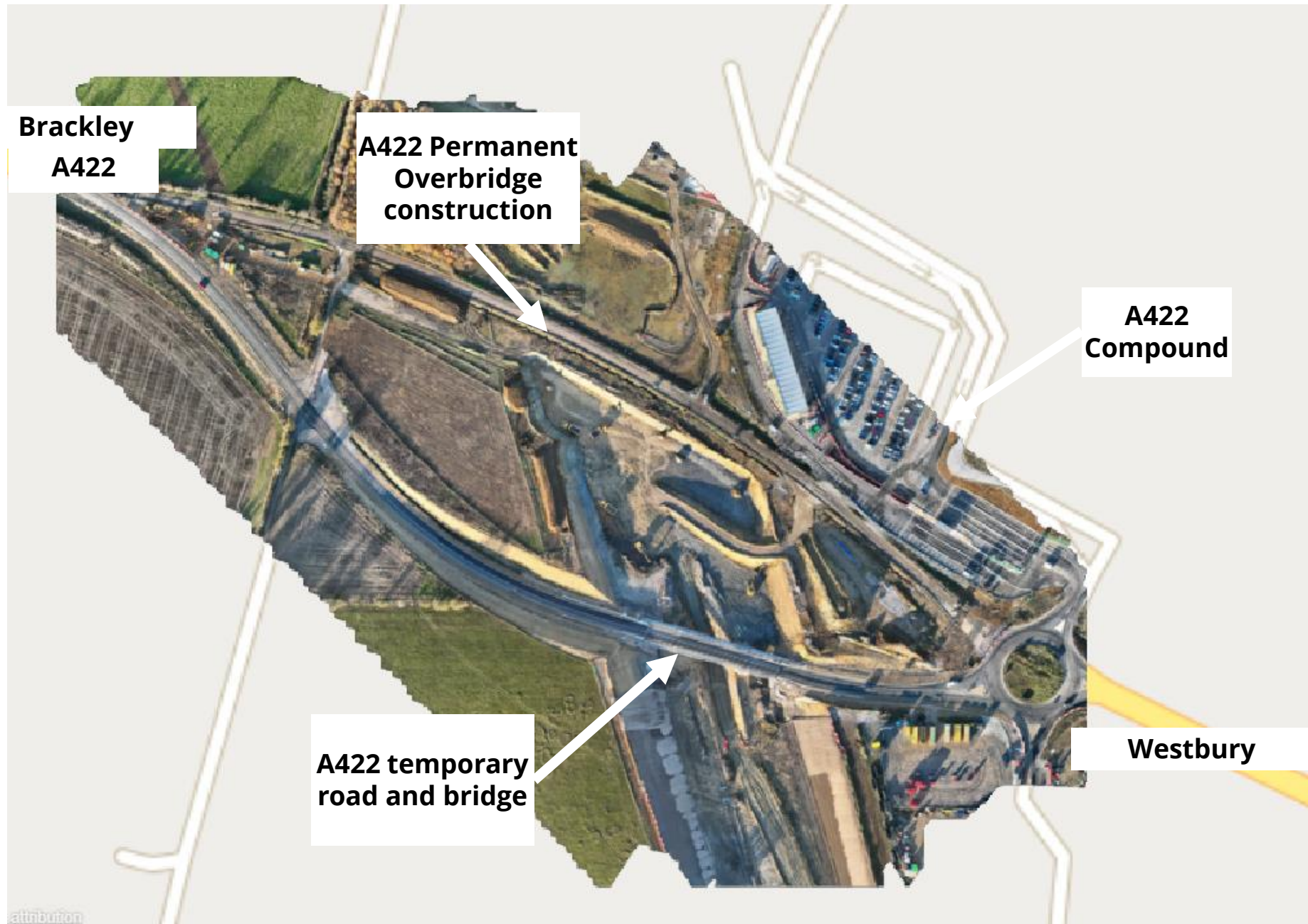
- Earthworks; Progress on the cutting and Turweston embankment.
- Winter water management.
- Temporary diversion Great River Ouse diversion is complete.
- Piling starting mid-December
 - 30 piles in total
 - 31 to 45 m depth
 - Complete by spring 2024.



A422

Current Activity

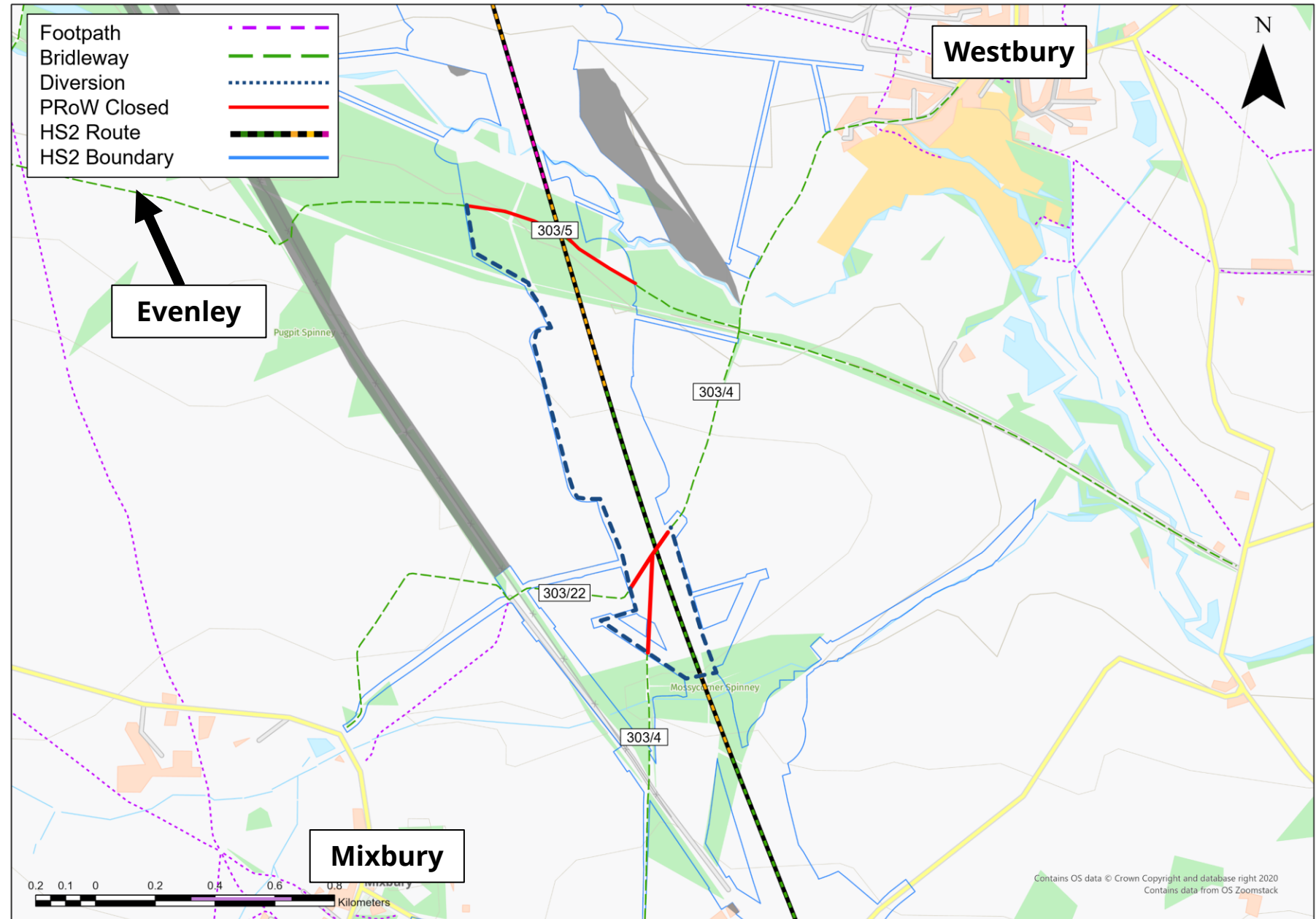
- Construction of the A422 temporary bridge is complete.
- Piling starts early 2024
- Beams being installed winter 2024
- All works can be carried out offline, now the temporary road is in place.



Footpaths

Current Activity

- Westbury 'circular ride'
- Bridleway 303/5 will need to close **8 January 2024** to allow the construction of the Westbury Viaduct.
- We will provide a diversion route using the existing 303/4 bridleway crossing and construct a temporary route to the west of the HS2 line.
- The bridleway known as 303/4 crosses the route of the HS2 railway.



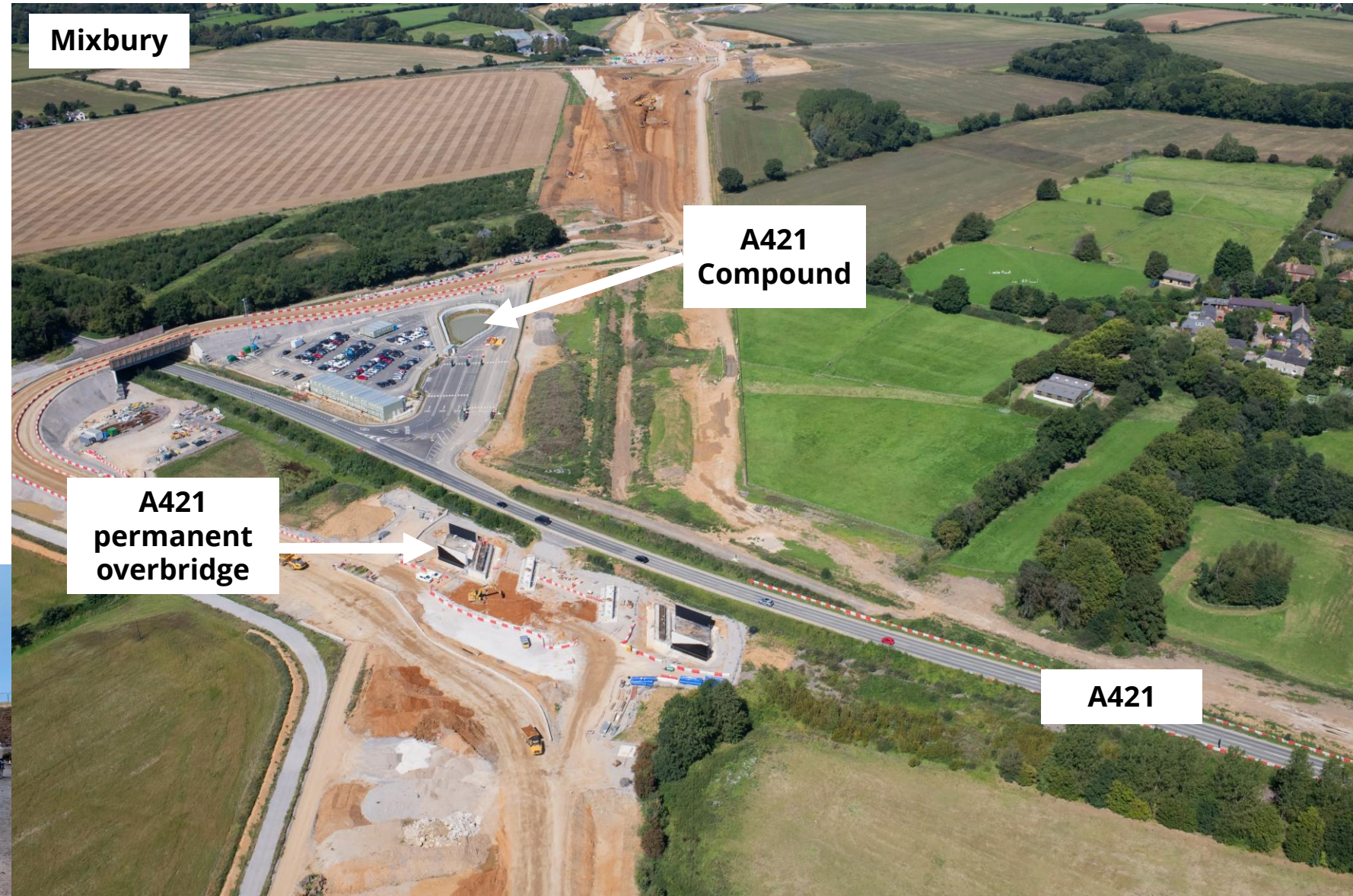
A421

Current Activity

- A421 overbridge
- Completing wingwalls
- Abutments
- Crane platform
- Steel beam installation early 2024



Abutments



Mixbury

**A421
Compound**

**A421
permanent
overbridge**

A421

Contact our HS2 Helpdesk team

HS2

You can contact our HS2 Helpdesk team all day, every day of the year on:

Freephone **08081 434 434**

Minicom **08081 456 472**

Email **hs2enquiries@hs2.org.uk**



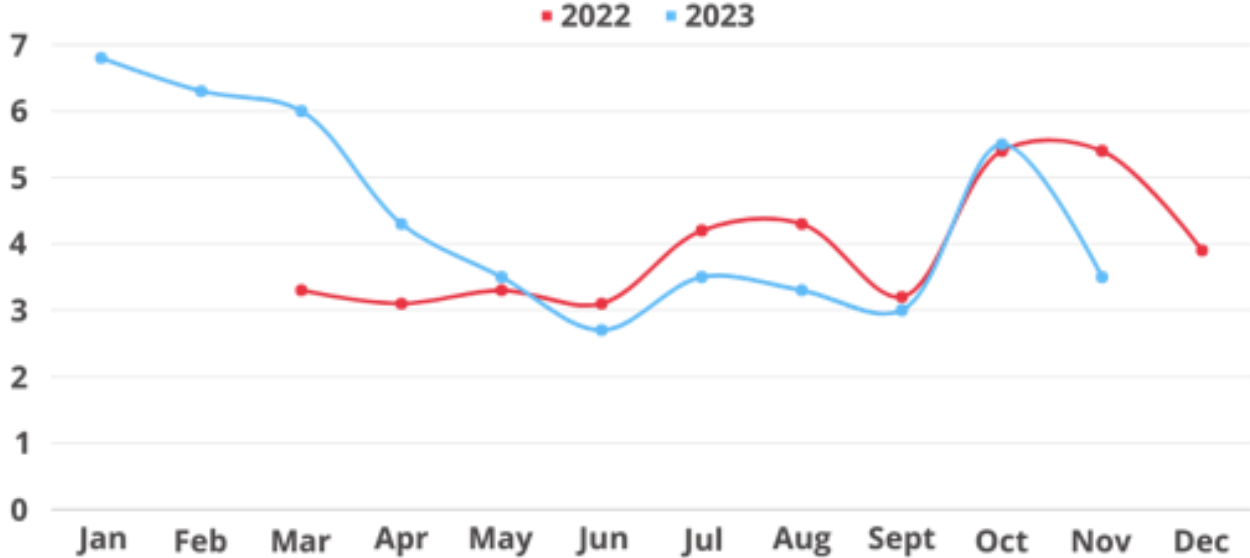
HS2 Enquiries & Complaints

Themes

- 1. Lighting
- 2. Traffic

Performance

- 1. Response Times
- 2. Urgent Response Times



This year's average response time: 4.4 days
Urgent Cases (97) resolved in 2 days: 100%



Christmas Shutdown

Last Working Day

Friday 22nd December

Return to Work

Monday 2nd January

**A VERY MERRY
CHRISTMAS
and Happy New Year!**



HS2

EKFB update

15 December 2023

Chris James – EKFB Senior Engagement Manager

Simon Davis – G2S – Engagement Manager, EFFB

Dave Butcher – T2G - Engagement Manager, EKFB

